



KBS Pipe Seal C

Fire protection for combustible pipes

KBS Pipe Seal C prevents the passage of fire, hot gases and smoke when plastic pipes up to an outer diameter of 160 mm penetrate walls or floors.

KBS Pipe Seal C consists of a flexible steel sheet casing with a snap lock and fixing clamps. The intumescent material is fixed on the steel. After installation the intumescent material forms a layer between steel and pipe. In case of fire it expands rapidly inwards squeezing together the collapsing pipe until the aperture is completely sealed. The intumescent material used is based on a unique chemical formulation which is not affected by water and carbon dioxide. To fix KBS Pipe Seal C in walls or floors use dowels or mortar together with a special holding ring.

Once installed, KBS Pipe Seal C requires no maintenance.

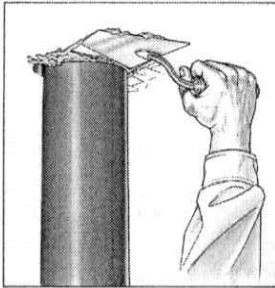
KBS Pipe Seal C has been tested and approved to different worldwide standards.

KBS Pipe Seal C is approved for application on PVC pipe ranging from 32mm Dia to 160mm Dia.

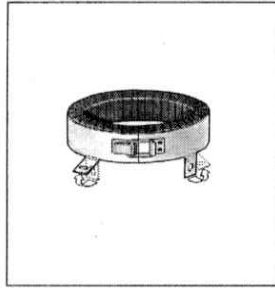
KBS® Pipe Seal C

Installation Recommendation

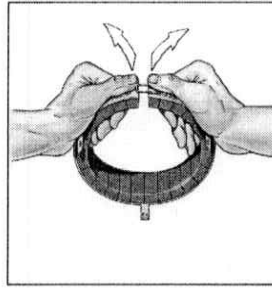
Picture ①



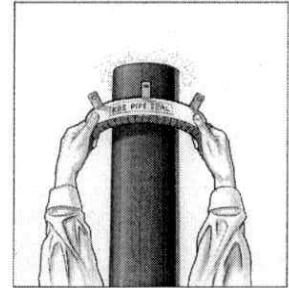
Picture ②



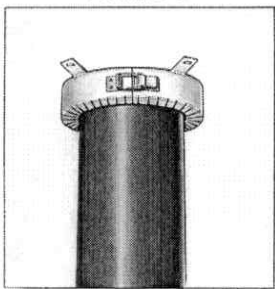
Picture ③



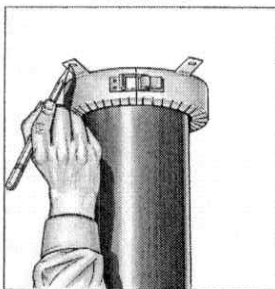
Picture ④



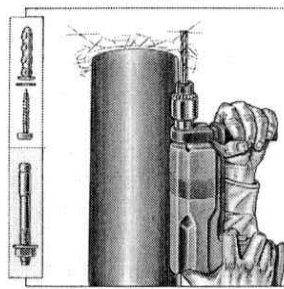
Picture ⑤



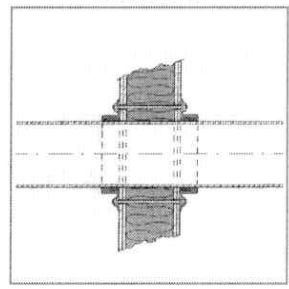
Picture ⑥



Picture ⑦



Picture ⑧



The gap between plastic pipe and wall/ceiling has to be closed tightly with incombustible and dimensionally stable material, for example conventional mortar or mineral wool (melting point >1000°C) (picture 1). If mineral wool will be used for filling the gap width should be max. 15 mm.

To install the pipe collar **KBS® Pipe Seal C** at first the fixing clamps must be bent 90° outwards with flat-nosed pliers (picture 2). Now open the clamp locking device and bend open the pipe collar (picture 3) so that it can be put around the pipe to be sealed (picture 4).

Now the pipe collar is fixed around the pipe with the clamp locking device (picture 5). Take care that the spring retention is locked.

KBS® Pipe Seal C types 32 - 63 have a bending lock. Put the longer clip of the L-shaped pin into the opening and bend it around 180°.

To secure the lock of the pipe collar the shorter clip of the pin has to be bended also.

Push the pipe collar on the pipe against the wall/ceiling and mark the number of drill holes given by the fixing clamps (picture 6). Push back the pipe collar to drill the holes (picture 7). Push **KBS® Pipe Seal C** again against the wall/ceiling and fix it with the recommended dowels/bolts (see table).

KBS® Pipe Seal C can also be installed for sealing plastic pipes in lightweight partition walls. In this case the collars are fixed with penetrating threaded rods M6 (**KBS® Pipe Seal C** types 32– 75) or M8 (**KBS® Pipe Seal C** types 90 – 160), nuts M6/M8 and washers 6.5 x 20 / 8.5 x 20 (picture 8).

KBS® Pipe Seal type	Outer pipe diameter [mm]	Concrete walls/ceilings with steel dowels /-bolts	Fixing at Aerated concrete walls/ceilings or masonry walls/ceilings with plastic dowels/steel bolts
C 32	32	Upat Express anchor 6/10	Fischer S8H 100 R with hexagonal head bolts 6 x 105
C 40	40		
C 50	50		
C 63	63		
C 75	75		
C 90	90	Upat Express anchor 8/15	
C110	110		
C125	125		
C140	140		
C160	160		

[All products in the text marked with an ® are trademarks of the Cognis Group]

The information on product specifications provided herein is only binding to the extent confirmed by Cognis in a written Sales Agreement. COGNIS EXPRESSLY DISCLAIMS ANY RESPONSIBILITY FOR THE SUITABILITY OF THE PRODUCTS FOR ANY SPECIFIC OR PARTICULAR PURPOSES INTENDED BY THE USER. Suggestions for the use and application of the products and guide formulations are given for information purposes only and without commitment. Such suggestions do not release Cognis' customers from testing the products as to their suitability for the customer's intended processes and purposes. Cognis does not assume any liability or risk involved in the use of its products as the conditions of use are beyond its control. The user of the products is solely responsible for compliance with all laws and regulations applying to the use of the products, including intellectual property rights of third parties.