



KBS FR Caulking



Installation recommendations

KBS FR Caulking

Fire Retardant Intumescent Caulk

KBS FR Caulking is used to seal electrical single cables or cablebundles, plastic pipes, steel and copper pipes which penetrate fire rated walls and floors.

KBS FR Caulking has intumescent properties causing it to expand in volume when exposed to fire and forms an insulating foam which resists the passage of smoke and fire.

Application Recommendation for electrical cables, plastic pipes, steel and copper pipes Installation in wall or floor.

Before applying **KBS FR Caulking**, dirt, dust or oil have to be removed. Dry and absorbent surfaces should be wetted with water prior to application.

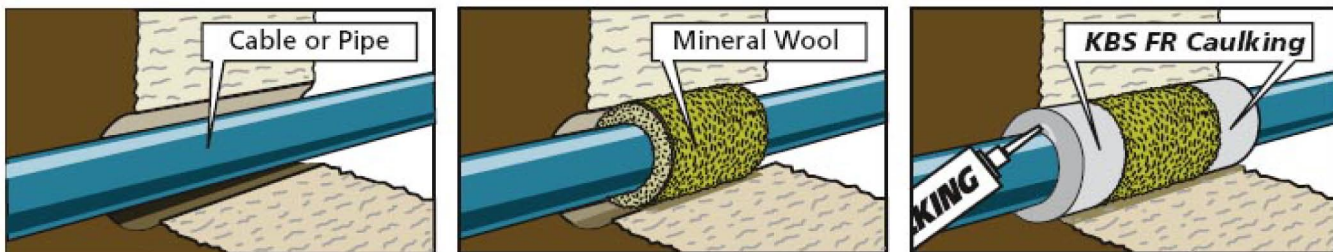
The space around the cables or pipes must be plugged with non combustible loose mineral wool. Then **KBS FR Caulking** is pressed out of the cartridge to obtain a tight seal on both sides of the penetration.

The surface of **KBS FR Caulking** can be smoothed by means of a wet brush.

KBS FR Caulking:

annular space: min. 1/2" (13mm), max. 1 1/2" (38mm).

depth : min. 5/8" (16mm).



Being a water based material, application tools may be cleaned with water after use.

Drying time of **KBS FR Caulking** depends from temperature and humidity, a 1/5" thick layer is dry after 2 weeks (23°C / 50 %).

KBS FR Caulking is resistant to humidity and moisture.

Application temperatures should be at least 5 ° C.

Safety Instructions:

User friendly - solvent free, does not contain asbestos or halogens.

No special requirements, rubber gloves and safety goggles recommended, see MSDS

ANTEC ENGINEERING PTY LTD

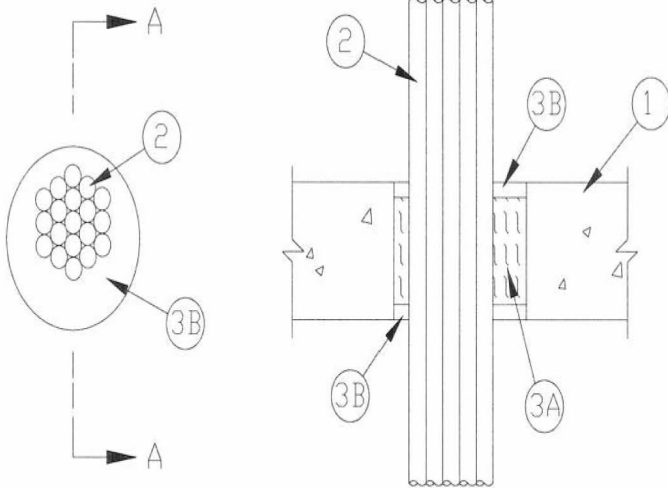
9 Chicago Avenue, Blacktown, NSW, 2148, Australia
Ph: +61 (02) 9622 9622 • Fax: +61 (02) 9622 9199
www.antec.com.au



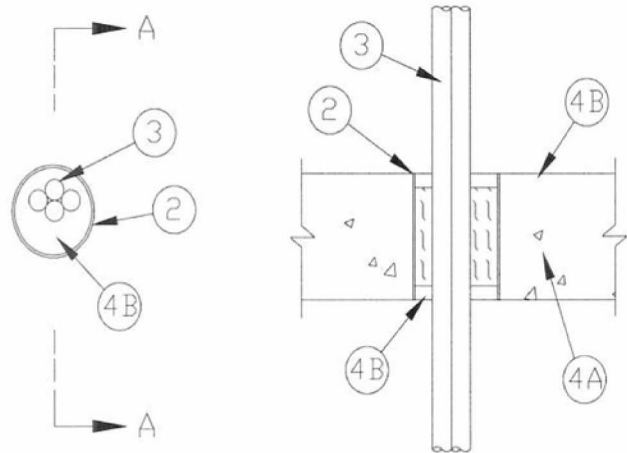


KBS FR Caulking

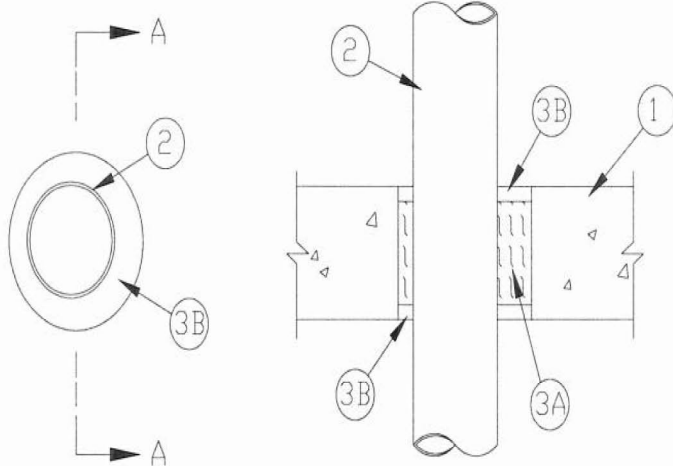
Installation recommendations



Cable Installation



Cable installation



Pipe Installation

The above data, particularly the recommendations for the application and use of our products are based on our knowledge and experience. Due to different materials and conditions of application, which are beyond our control, we recommend in any case to carry out sufficient tests in order to ensure that our products are suitable for the intended processes and applications. Therefore, any liability for such recommendations or any oral advice is expressly excluded unless we have acted wilfully or by gross negligence.

ANTEC ENGINEERING PTY LTD

9 Chicago Avenue, Blacktown, NSW, 2148, Australia
 Ph: +61 (02) 9622 9622 • Fax: +61 (02) 9622 9199
www.antec.com.au

